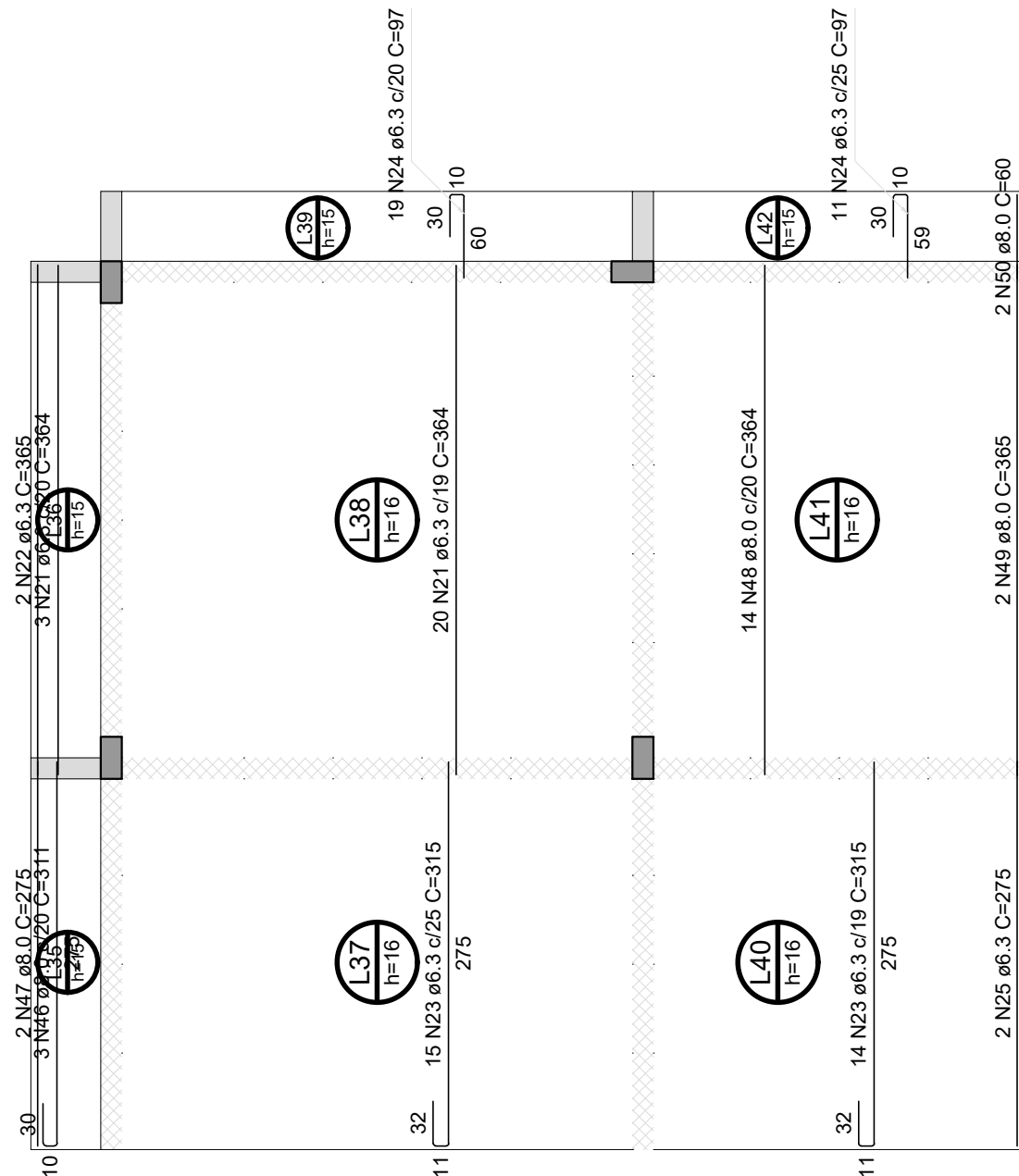
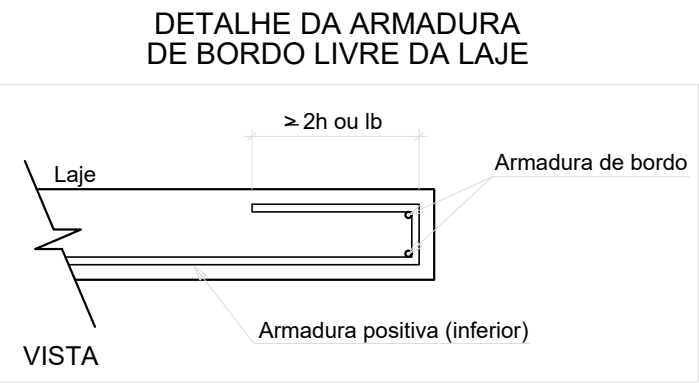




Armação positiva das lajes do pavimento Térreo (Eixo X)

escala 1:50



RELAÇÃO DO AÇO					
ACO	N	DIA	QUANT	G TOTAL	
CA50	1	5.0	33	653	21449
	2	5.0	33	653	21449
	3	5.0	12	425	5100
	4	5.0	12	425	5100
	5	5.0	24	224	5376
	6	5.0	12	623	8106
	7	5.0	27	679	18333
	8	5.0	6	123	1533
	9	5.0	18	204	3072
	10	5.0	18	204	3072
	11	5.0	18	204	3072
	12	5.0	69	676	8044
	13	5.0	69	676	8044
	14	5.0	27	270	3300
	15	5.0	18	204	3072
	16	5.0	36	360	4320
	17	5.0	36	360	4320
	18	5.0	36	360	4320
	19	5.0	36	360	4320
	20	5.0	36	360	4320
	21	5.0	36	360	4320
	22	5.0	36	360	4320
	23	5.0	36	360	4320
	24	5.0	36	360	4320
	25	5.0	36	360	4320
	26	5.0	36	360	4320
	27	5.0	36	360	4320
	28	5.0	36	360	4320
	29	5.0	36	360	4320
	30	5.0	36	360	4320
	31	5.0	36	360	4320
	32	5.0	36	360	4320
	33	5.0	36	360	4320
	34	5.0	36	360	4320
	35	5.0	36	360	4320
	36	5.0	36	360	4320
	37	5.0	36	360	4320
	38	5.0	36	360	4320
	39	5.0	36	360	4320
	40	5.0	36	360	4320
	41	5.0	36	360	4320
	42	5.0	36	360	4320
	43	5.0	36	360	4320
	44	5.0	36	360	4320
	45	5.0	36	360	4320
	46	5.0	36	360	4320
	47	5.0	36	360	4320
	48	5.0	36	360	4320
	49	5.0	36	360	4320
	50	5.0	36	360	4320
	51	5.0	36	360	4320
	52	5.0	36	360	4320
	53	5.0	36	360	4320
	54	5.0	36	360	4320
	55	5.0	36	360	4320
	56	5.0	36	360	4320
	57	5.0	36	360	4320
	58	5.0	36	360	4320
	59	5.0	36	360	4320
	60	5.0	36	360	4320
	61	5.0	36	360	4320
	62	5.0	36	360	4320
	63	5.0	36	360	4320
	64	5.0	36	360	4320
	65	5.0	36	360	4320
	66	5.0	36	360	4320
	67	5.0	36	360	4320
	68	5.0	36	360	4320
	69	5.0	36	360	4320
	70	5.0	36	360	4320
	71	5.0	36	360	4320
	72	5.0	36	360	4320
	73	5.0	36	360	4320
	74	5.0	36	360	4320
	75	5.0	36	360	4320
	76	5.0	36	360	4320
	77	5.0	36	360	4320
	78	5.0	36	360	4320
	79	5.0	36	360	4320
	80	5.0	36	360	4320
	81	5.0	36	360	4320
	82	5.0	36	360	4320
	83	5.0	36	360	4320
	84	5.0	36	360	4320
	85	5.0	36	360	4320
	86	5.0	36	360	4320
	87	5.0	36	360	4320
	88	5.0	36	360	4320
	89	5.0	36	360	4320
	90	5.0	36	360	4320
	91	5.0	36	360	4320
	92	5.0	36	360	4320
	93	5.0	36	360	4320
	94	5.0	36	360	4320
	95	5.0	36	360	4320
	96	5.0	36	360	4320
	97	5.0	36	360	4320
	98	5.0	36	360	4320
	99	5.0	36	360	4320
	100	5.0	36	360	4320

RESUMO DO AÇO			
ACO	DIA	G TOTAL	PESO + 10%
CA50	5.0	4614	124.2
	5.0	1734.3	726.5
	12.0	124.3	36.5
	18.0	55.2	36.0
	25.0	25.0	36.0
	36.0	25.0	36.0
	48.0	25.0	36.0
	60.0	25.0	36.0
	72.0	25.0	36.0
	84.0	25.0	36.0
	96.0	25.0	36.0
	108.0	25.0	36.0
	120.0	25.0	36.0
	132.0	25.0	36.0
	144.0	25.0	36.0
	156.0	25.0	36.0
	168.0	25.0	36.0
	180.0	25.0	36.0
	192.0	25.0	36.0
	204.0	25.0	36.0
	216.0	25.0	36.0
	228.0	25.0	36.0
	240.0	25.0	36.0
	252.0	25.0	36.0
	264.0	25.0	36.0
	276.0	25.0	36.0
	288.0	25.0	36.0
	300.0	25.0	36.0
	312.0	25.0	36.0
	324.0	25.0	36.0
	336.0	25.0	36.0
	348.0	25.0	36.0
	360.0	25.0	36.0
	372.0	25.0	36.0
	384.0	25.0	36.0
	396.0	25.0	36.0
	408.0	25.0	36.0
	420.0	25.0	36.0
	432.0	25.0	36.0
	444.0	25.0	36.0
	456.0	25.0	36.0
	468.0	25.0	36.0
	480.0	25.0	36.0
	492.0	25.0	36.0
	504.0	25.0	36.0
	516.0	25.0	36.0
	528.0	25.0	36.0
	540.0	25.0	36.0
	552.0	25.0	36.0
	564.0	25.0	36.0
	576.0	25.0	36.0
	588.0	25.0	36.0
	600.0	25.0	36.0
	612.0	25.0	36.0
	624.0	25.0	36.0
	636.0	25.0	36.0
	648.0	25.0	36.0
	660.0	25.0	36.0
	672.0	25.0	36.0
	684.0	25.0	36.0
	696.0	25.0	36.0
	708.0	25.0	36.0
	720.0	25.0	36.0
	732.0	25.0	36.0
	744.0	25.0	36.0
	756.0	25.0	36.0
	768.0	25.0	36.0
	780.0	25.0	36.0
	792.0	25.0	36.0
	804.0	25.0	36.0
	816.0	25.0	36.0
	828.0	25.0	36.0
	840.0	25.0	36.0
	852.0	25.0	36.0
	864.0	25.0	36.0
	876.0	25.0	36.0
	888.0	25.0	36.0
	900.0	25.0	36.0
	912.0	25.0	36.0
	924.0	25.0	36.0
	936.0	25.0	36.0
	948.0	25.0	36.0
	960.0	25.0	36.0
	972.0	25.0	36.0
	984.0	25.0	36.0
	996.0	25.0	36.0
	1008.0	25.0	36.0
	1020.0	25.0	36.0
	1032.0	25.0	36.0
	1044.0	25.0	36.0
	1056.0	25.0	36.0
	1068.0	25.0	36.0
	1080.0	25.0	36.0
	1092.0	25.0	36.0
	1104.0	25.0	36.0
	1116.0	25.0	36.0
	1128.0	25.0	36.0
	1140.0	25.0	36.0
	1152.0	25.0	36.0
	1164.0	25.0	36.0
	1176.0	25.0	36.0
	1188.0	25.0	36.0
	1200.0	25.0	36.0
	1212.0	25.0	36.0
	1224.0	25.0	36.0
	1236.0	25.0	36.0
	1248.0	25.0	36.0
	1260.0	25.0	36.0
	1272.0	25.0	36.0
	1284.0	25.0	36.0
	1296.0	25.0	36.0
	1308.0	25.0	36.0
	1320.0	25.0	36.0
	1332.0	25.0	36.0
	1344.0	25.0	36.0
	1356.0	25.0	36.0
	1368.0	25.0	36.0
	1380.0	25.0	36.0
	1392.0	25.0	36.0
	1404.0	25.0	36.0
	1416.0	25.0	36.0
	1428.0	25.0	36.0
	1440.0	25.0	36.0
	1452.0	25.0	36.0
	1464.0	25.0	36.0
	1476.0	25.0	36.0
	1488.0	25.0	36.0
	1500.0	25.0	36.0
	1512.0	25.0	36.0
	1524.0	25.0	36.0
	1536.0	25.0	36.0
	1548.0	25.0	36.0
	1560.0	25.0	36.0
	1572.0	25.0	36.0
	1584.0	25.0	36.0
	1596.0	25.0	36.0
	1608.0	25.0	36.0
	1620.0	25.0	36.0
	1632.0	25.0	36.0
	1644.0	25.0	36.0
	1656.0	25.0	36.0
	1668.0	25.0	36.0
	1680.0	25.0	36.0
	1692.0	25.0	36.0
	1704.0	25.0	36.0
	1716.0	25.0	36.0
	1728.0	25.0	36.0
	1740.0	25.0	36.0
	1752.0	25.0	36.0
	1764.0	25.0	36.0
	1776.0	25.0	36.0
	1788.0	25.0	36.0
	1800.0	25.0	36.0
	1812.0	25.0	36.0
	1824.0	25.0	36.0
	1836.0	25.0	36.0
	1848.0	25.0	36.0
	1860.0	25.0	36.0
	1872.0	25.0	36.0
	1884.0	25.0	36.0
	1896.0	25.0	36.0
	1908.0	25.0	36.0
	1920.0	25.0	36.0
	1932.0	25.0	36.0
	1944.0	25.0	36.0
	1956.0	25.0	36.0
	1968.0	25.0	36.0
	1980.0	25.0	36.0
	1992.0	25.0	36.0
	2004.0	25.0	36.0
	2016.0	25.0	36.0
	2028.0	25.0	36.0
	2040.0	25.0	36.0
	2052.0	25.0	36.0
	2064.0	25.0	36.0
	2076.0	25.0	36.0
	2088.0	25.0	36.0
	2100.0	25.0	36.0
	2112.0	25.0	36.0
	2124.0	25.0	36.0
	2136.0	25.0	36.0
	2148.0	25.0	36.0
	2160.0	25.0	36.0
	2172.0	25.0	36.0
	2184.0	25.0	36.0
	2196.0	25.0	36.0
	2208.0	25.0	36.0
	2220.0	25.0	36.0
	2232.0	25.0	36.0
	2244.0	25.0	36.0
	2256.0	25.0	36.0
	2268.0	25.0	36.0
	2280.0	25.0	36.0
	2292.0	25.0	36.